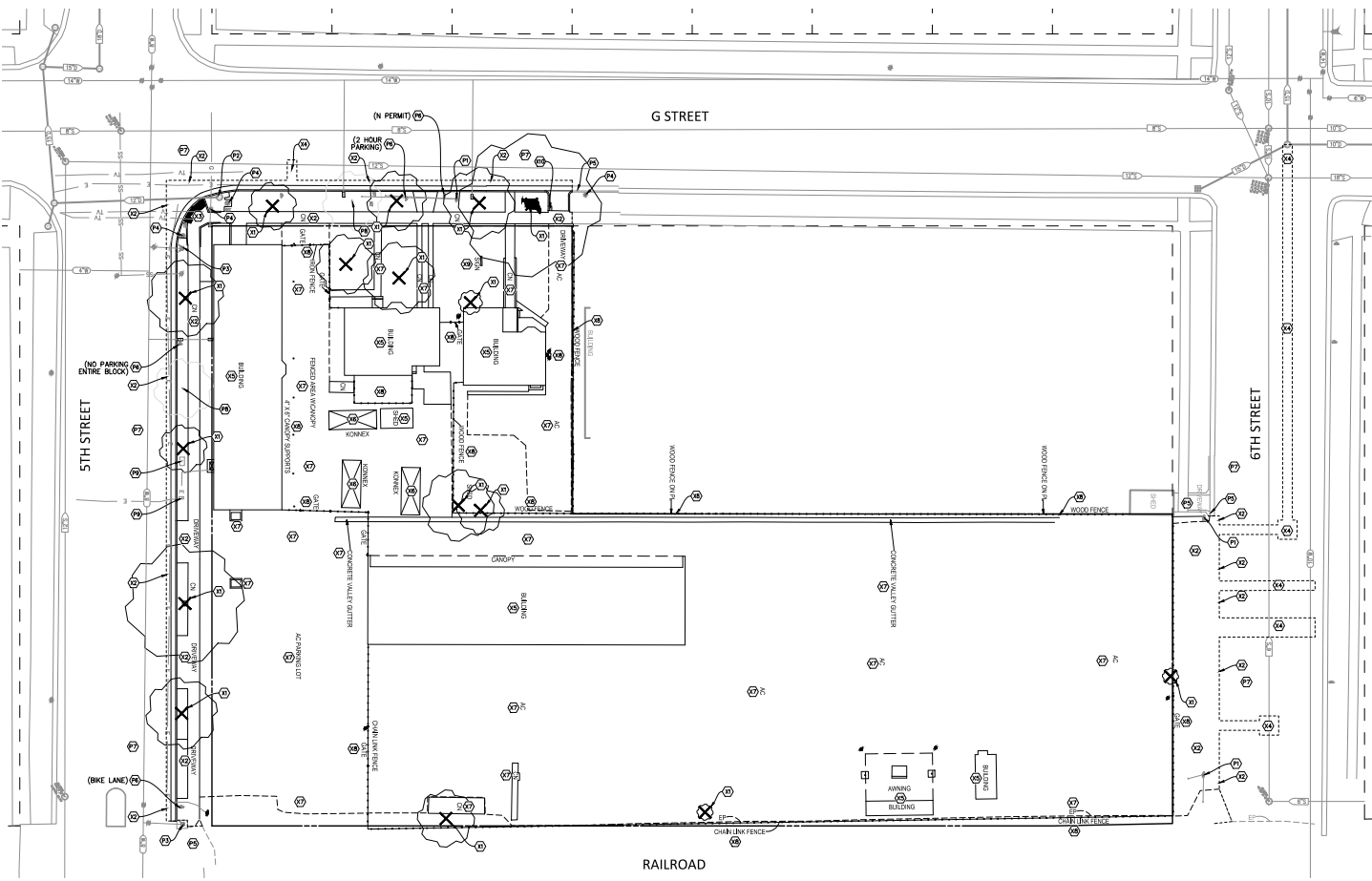




REV	ISSUE	DATE
1	ISSUE	06/15/17
2	ISSUE	07/10/17
3	ISSUE	07/10/17
4	ISSUE	07/10/17
5	ISSUE	07/10/17

DATE DESIGNED: 06/15/17
 ALL DIMENSIONS ARE NOT TO SCALE UNLESS OTHERWISE NOTED.
 ALL DIMENSIONS ARE TO FACE UNLESS OTHERWISE NOTED.
 ALL DIMENSIONS ARE TO CENTERLINE UNLESS OTHERWISE NOTED.
 ALL DIMENSIONS ARE TO CENTERLINE UNLESS OTHERWISE NOTED.

CIVIL DEMOLITION PLAN
 SCALE: 1" = 20'
 SHEET NO. 2020 - 1000000 - 01
 SHEET TITLE: CIVIL DEMOLITION PLAN



- PROTECTION KEYNOTES:**
- 1. SAVE AND PROTECT EXISTING UTILITY POLE AND ASSOCIATED GUY WIRES/ANCHORS, PULL BOXES, HANDS, AND OVERHEAD LINES UNLESS OTHERWISE INDICATED ON ELECTRICAL DRAWINGS.
 - 2. SAVE AND PROTECT EXISTING CURB INLET AND ASSOCIATED PIPES.
 - 3. SAVE AND PROTECT EXISTING FIRE HYDRANT AND ASSOCIATED PIPES AND VALVES.
 - 4. SAVE AND PROTECT EXISTING STREET LIGHT OR TRAFFIC SIGNAL POLE (AND MOUNTED SIGNAGE, WHERE PRESENT) AND ASSOCIATED CONDUITS AND PULL BOXES.
 - 5. SAVE AND PROTECT EXISTING CURB, GUTTER, SIDEWALK, DRIVEWAY APRONS AND PAVEMENT NOT OTHERWISE SHOWN TO BE REMOVED.
 - 6. SAVE AND PROTECT EXISTING STREET SIGN.
 - 7. SAVE AND PROTECT EXISTING PAVEMENT NOT OTHERWISE SHOWN TO BE REMOVED.
 - 8. SAVE AND PROTECT EXISTING TREE. SEE LANDSCAPE PLANS FOR TREE PROTECTION REQUIREMENTS AND NOTES.
 - 9. SAVE AND PROTECT EXISTING ELECTRICAL BOX AND ASSOCIATED CONDUITS UNLESS OTHERWISE INDICATED ON ELECTRICAL DRAWINGS.

- DEMOLITION KEYNOTES:**
- 11. REMOVE EXISTING TREE AND ALL ROOTS GREATER THAN 1/2-INCH IN DIAMETER. VERIFY REMOVAL WITH LANDSCAPE PLANS.
 - 12. NOTE: TREE SHALL ONLY BE REMOVED DURING THE NON-BREEDING SEASON FOR BIRCH (SEPTEMBER 1 - FEBRUARY 15, ANNUALLY). IF TREES MUST BE REMOVED DURING THE BREEDING SEASON, A QUALIFIED WILDLIFE BIOLOGIST WILL NEED TO DO A NEST SURVEY TO ENSURE NO NESTING BIRDS ARE PRESENT.
 - 13. SAWCUT 2' MIN. FROM EXISTING LIP OF GUTTER (OR AS INDICATED) AND REMOVE EXISTING CURB, GUTTER, SIDEWALK, DRIVEWAY APRONS AND PAVEMENT TO NEAREST JOINT AS REQUIRED TO CONSTRUCT NEW FRONTAGE IMPROVEMENTS.
 - 14. SAWCUT AS INDICATED AND REMOVE EXISTING CURB RAMP AND ADJACENT SIDEWALK AND CONCRETE PAVEMENT.
 - 15. SAWCUT PAVEMENT AS REQUIRED TO CONSTRUCT NEW UTILITY SERVICES.
 - 16. REMOVE EXISTING BUILDING STRUCTURE INCLUDING ALL FOUNDATIONS AND UNDERGROUND UTILITY PIPES.
 - 17. REMOVE KONNEX BOX.
 - 18. REMOVE ALL ASPHALT AND CONCRETE PAVEMENT AND SIDEWALKS, CURBS, AND GUTTERS WITHIN PROJECT LIMITS.
 - 19. REMOVE ALL FENCES, GATES, POSTS, BOLLARDS AND FOUNDATIONS WITHIN PROJECT LIMITS.
 - 20. REMOVE ALL SIGNS, SIGN POSTS, FOUNDATIONS WITHIN PROJECT LIMITS.
 - 21. SAW-CUT AND SALVAGE AN APPROXIMATELY 12'x24" PIECE OF CONCRETE DRIVEWAY APRON WHERE STAMPED "WPA 12x24". SEE LANDSCAPE PLANS FOR NEW LOCATION TO SET CONCRETE RECTANGLE.

- DEMOLITION NOTES:**
1. ALL SIDEWALK AND CURB & GUTTER REMOVALS SHALL BE TO THE NEAREST JOINT OR SCORE LINE BEYOND THE LIMITS SHOWN HEREON.